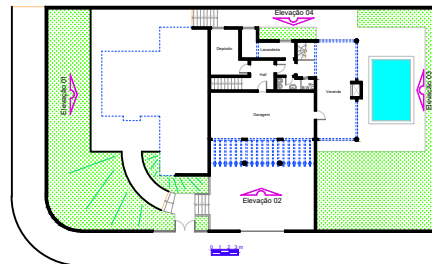
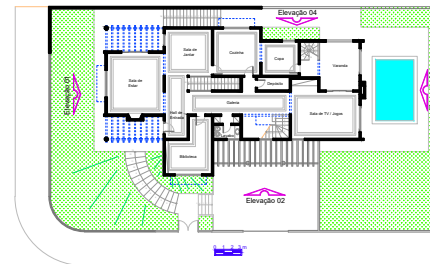


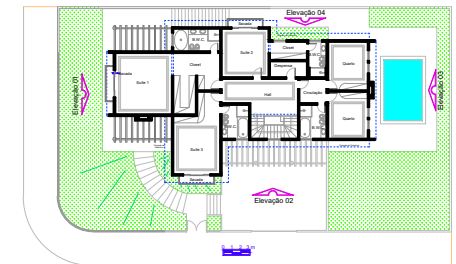
Implantação e Cobertura



Subsolo  
A = 123,64 m<sup>2</sup>

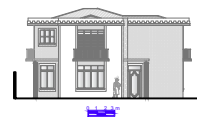


Térreo  
A = 208,24 m<sup>2</sup>

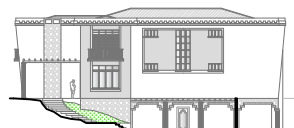


Superior  
A = 208,40 m<sup>2</sup>

Área Total = 540,28 m<sup>2</sup>



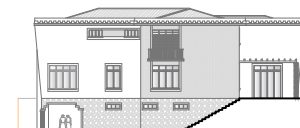
Elevação 01



Elevação 02



Elevação 03



Elevação 04